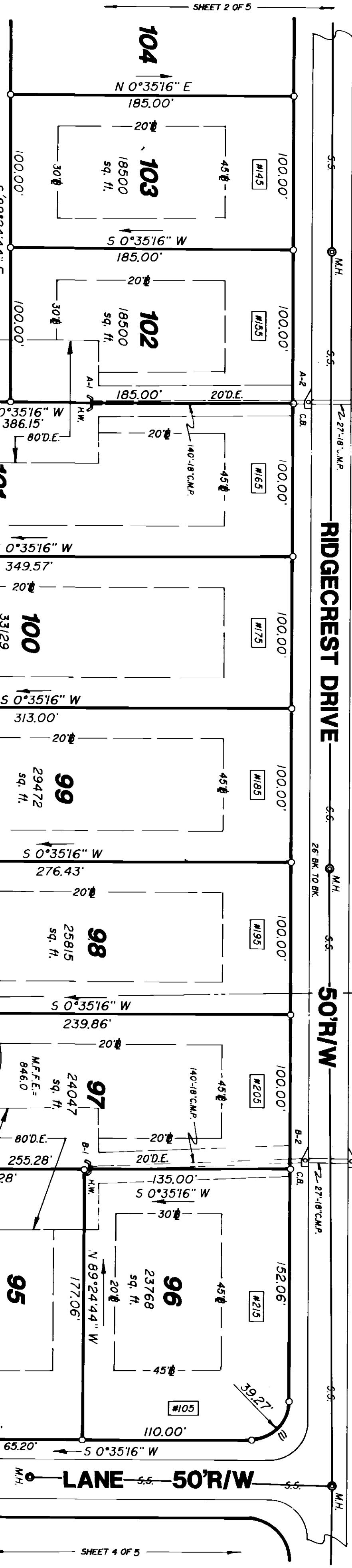
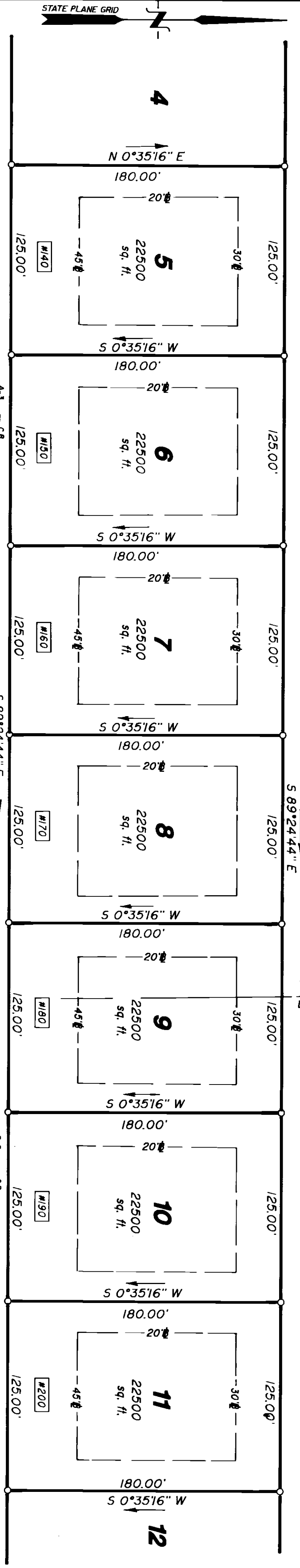


STONEHILL SUBDIVISION



R/W CURVE DATA

NO.	ARC	CHORD	BEARING	RADIUS	LOT
1	39.27	35.36	S 44°24'44" E	25.00'	96
2	90.03	89.56	S 10°47'38" W	252.72'	95

△ CURVE NO. 3
 $\Delta = 20^{\circ}24'44"$
 $R = 277.72'$
 $L = 98.94'$
 $T = 50.00'$

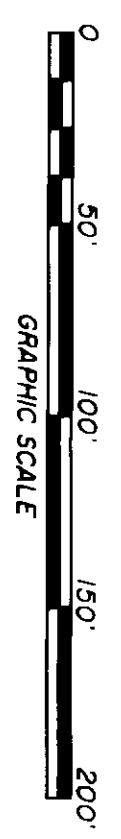
- LEGEND**
- ▲ - BUILDING LINE
 - F.H. - FIRE HYDRANT
 - O.S. - OUTLET STRUCTURE
 - M.H. - MANHOLE
 - S.S. - SANITARY SEWER
 - S.S.E. - SANITARY SEWER EASEMENT
 - C.B. - CATCH BASIN
 - J.B. - JUNCTION BOX
 - H.W. - HEADWALL
 - C.M.P. - CORRUGATED METAL PIPE
 - D.E. - DRAINAGE EASEMENT
 - I.P.S. - IRON PIN SET
 - I.P.F. - IRON PIN FOUND
 - M.F.F.E. - MINIMUM FINISHED FLOOR ELEVATION

T.B.M. - TOP OF CATCH BASIN
 BETWEEN LOTS 94 & 95
 ELEVATION = 842.62'



R. M. Boyd & Associates
 Land Surveying & Engineering

185 South Lee St.
 Fayetteville, Ga. 30214
 (770) 461-2417



MAGNOLIA RIDGE
 LAND LOTS 95 & 96 5TH DISTRICT
 FAYETTE COUNTY, GEORGIA

FINAL PLAT OF
 UNIT TWO

EDGEMOORE LANE 50'R/W

GEORGIA, FAYETTE COUNTY
 Filed and Recorded this 16 day
 of May 1999 12:45 P.M.
 Book 37 Page 162
W.D. Ballard Clerk